

# Self-Holding Screwdriver

## Features and Benefits

### Self-Holding Screwdriver features:

- Unique self-holding mechanism\*
- Two finger technique for ease of use
- Special clutch design to optimize holding forces

### Fits 3.5 Hex screws for:

- Guided locking screw insertion
- Freehand locking screw insertions
- Screw removal

### 3 lengths to match surgeon preference:

- Extra Short version  
Freehand locking
- Short version  
Tibial and Humeral indications  
(Compatible with the short sleeve system)
- Long version  
Femoral indications incl. Gamma3  
(Compatible with the long sleeve system)

### Fully compatible with T2, S2 and Gamma3 systems

- 3.5 mm hex screws
  - Fully and partially threaded locking screws
- T2/S2 end caps and tibia/femur compression screws\*\*

### Fits within T2, S2 and Gamma3 Instrument trays

- Handle length and width match existing screwdriver
- Shaft diameter and lengths match existing screwdriver
- Compatible with existing tissue protection sleeves

\* EU and US Patent pending

\*\* Screwdriver shaft does not fit through targeter nail holding device

stryker®

Joint Replacements

Trauma, Extremities & Deformities

Craniomaxillofacial

Spine

Biologics

Surgical Products

Neuro & ENT

Interventional Pain

Navigation

Endoscopy

Communications

Imaging

Patient Handling Equipment

EMS Equipment

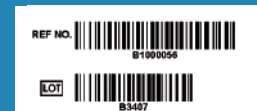
Stryker Trauma GmbH  
Prof.-Küntschner-Strasse 1-5  
D-24232 Schönkirchen - Germany  
[www.osteosynthesis.stryker.com](http://www.osteosynthesis.stryker.com)

The information presented in this brochure is intended to demonstrate a Stryker product. Always refer to the package insert, product label and/or user instructions before using any Stryker product. Surgeons must always rely on their own clinical judgment when deciding which products and techniques to use with their patients. Products may not be available in all markets. Product availability is subject to the regulatory or medical practices that govern individual markets. Please contact your Stryker representative if you have questions about the availability of Stryker products in your area.

Stryker Corporation or its subsidiary owns the registered trademark: Stryker  
Stryker Corporation or its subsidiary owns, uses or has applied for the following trademark: Asnis,  
Gamma3, Numelock, S2, T2

Literature Number: B1000056  
LOT B3407

Copyright © 2007 Stryker

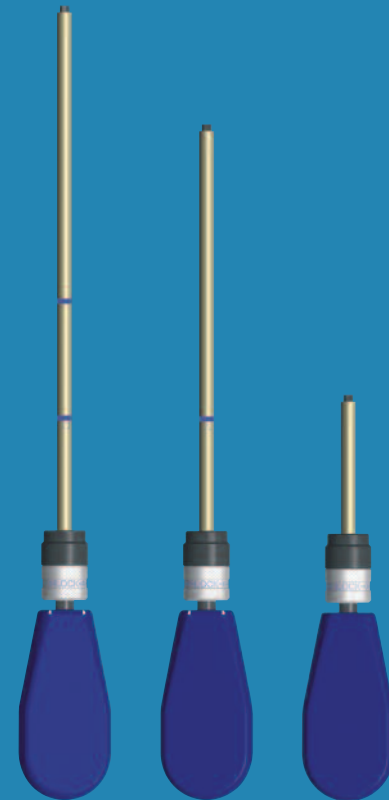


stryker®

Osteosynthesis

# Self-Holding Screwdriver

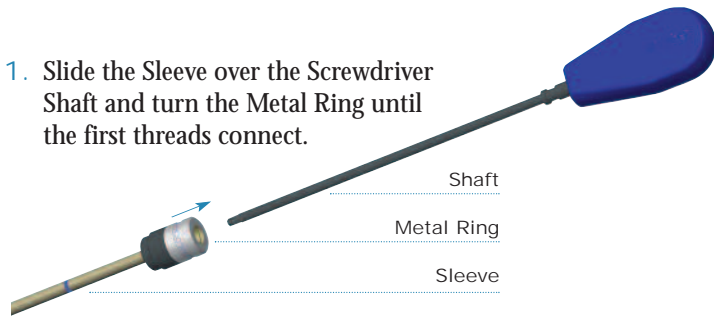
3.5 Hex Screwdriver



# Self-Holding Screwdriver

## Assembly / Disassembly

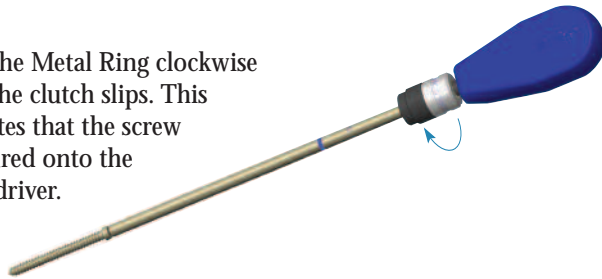
1. Slide the Sleeve over the Screwdriver Shaft and turn the Metal Ring until the first threads connect.



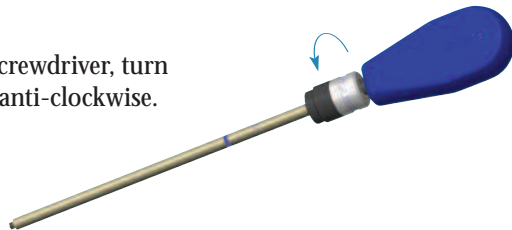
2. Insert the Screwdriver tip into the Screw head.



3. Turn the Metal Ring clockwise until the clutch slips. This indicates that the screw is secured onto the Screwdriver.

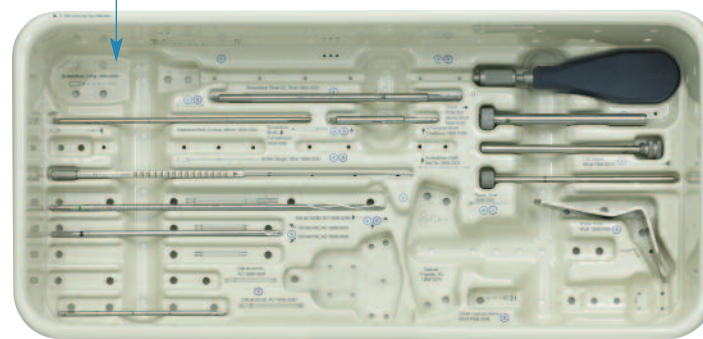


4. To detach the Screwdriver, turn the Metal Ring anti-clockwise.



## T2, S2 and Gamma3 System Compatibility

Screwdriver storage option



Example shown: Tibia Basic Set

### T2 Systems

Type	Set Cat No.	Tray Screwdriver Length**
Tibia Basic	1806-6000	Long
Femur Basic	1806-6005	Long
Combined Tibia/Femur	1806-6020	Long
Supracondylar Dedicated	1806-9201	Long
Recon Dedicated	1806-9401	Long
Humeral Basic	1806-6003	Short
Proximal Humeral Dedicated	1806-9321*	Short
Ankle Arthrodesis Dedicated	1806-9264	Long <sup>1</sup>

### S2 Systems

Type	Set Cat No.	Tray Screwdriver Length**
Combined Tibia/Femur	1806-9036	Long

### Gamma3 Systems

Type	Set Cat No.	Tray Screwdriver Length**
Gamma3	1320-6000	Long

\* Replaces 1806-9036

\*\* Maximum screwdriver size that will fit in tray – smaller sizes can be used.

1. A Long screwdriver is required since it is the only long shaft in this set.

**Note:** Keep the screwdriver shaft in line with the screw axis during insertion in free hand technique. If constant bending forces are applied to the screwdriver e.g. through soft tissue pressure, the tip of the self-holding screwdriver can slip out of the screw head during handling. In this case, release the locking mechanism and reinsert the screwdriver into the screw head. The screwdriver can be used in a locked or unlocked mode.

## Stryker 3.5 mm Hex Screws

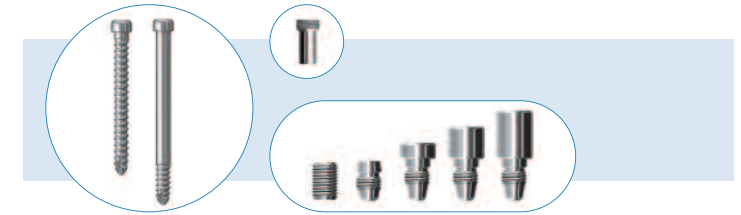
The Stryker self-holding screwdriver – 3.5 hex can be used on the following Stryker systems.

T2	5.0 Fully and Partially Threaded Screws 4.0 Fully and Partially Threaded Screws End Caps & Tibia/Femur Compression Screws <sup>2,3</sup>
S2	5.0 Fully and Partially Threaded Screws 4.0 Fully and Partially Threaded Screws End Caps
Gamma3	5.0 Fully Threaded Screws
ISO Screws	4.5 / 6.5 Screws
Asnis III	5.0 Screws <sup>4</sup>
Numelock II	6.5 Screws

2. Screwdriver shaft does not fit through targeter nail holding device.

3. Humeral compression screw has a 2.5 Hex.

4. The screwdriver is not cannulated and therefore cannot be used over a K-wire.



### Ordering Information

Size	Cat No.
Extra Short	1806-0203
Short	1806-0238
Long	1806-0233